



3D Printing Partner Product  
for SolidWorks

Version 1.2

27.04.2017

## 1. SOLIDWORKS VERSION

You need SolidWorks 2015 or higher. If you run an older version we recommend an update to fully enjoy this app.

## 2. ABOUT

This 3D Printing Partner Product provides a new way of easily printing models designed in SolidWorks. Just open the model you want to print and hit the command in the toolbar. The whole file will be printed. Your model will be uploaded to [3YOURMIND's printing platform](#) where you have the opportunity to get a printability check, choose one out of more than 150 printing materials and compare prices of the best printing services.

## 3. INSTALLATION

To install the product run the .msi installer in the package. If Solidworks is already open, you need to restart it to see and activate the new printing command.

If the setup does not work you can install the plugin manually:

- Extract all files in the 'install\_manually.zip' file.
- Copy the three files (3DPrintingPartnerProduct.png, 3DPrintingPartnerProduct.dll, upload3yd.dll) and paste them into the following directory:  
C:\ProgramFiles\SOLIDWORKS Corp\SOLIDWORKS\
- On a 64bit System you have to manually register the .dll file by using the console:  
Start → search for 'cmd.exe' (right click, run as admin!) and type the following lines (two lines):

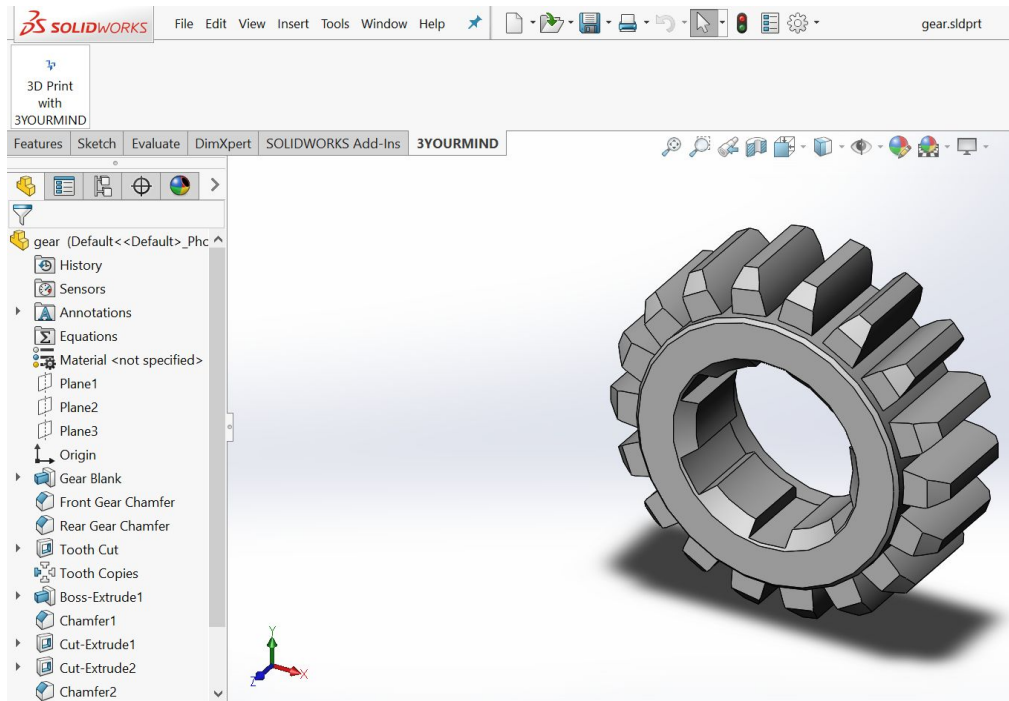
```
cd C:\Windows\Microsoft.NET\Framework64\v4.0.30319 and press Enter
regasm.exe "C:\Program Files\SOLIDWORKS Corp\SOLIDWORKS\3DPrintingPartnerProduct.dll /codebase
and press Enter
```

(If you installed Solidworks in a custom location - standard location is C:\ProgramFiles\SOLIDWORKS Corp\SOLIDWORKS - you have to change the paths accordingly to make the command work.)

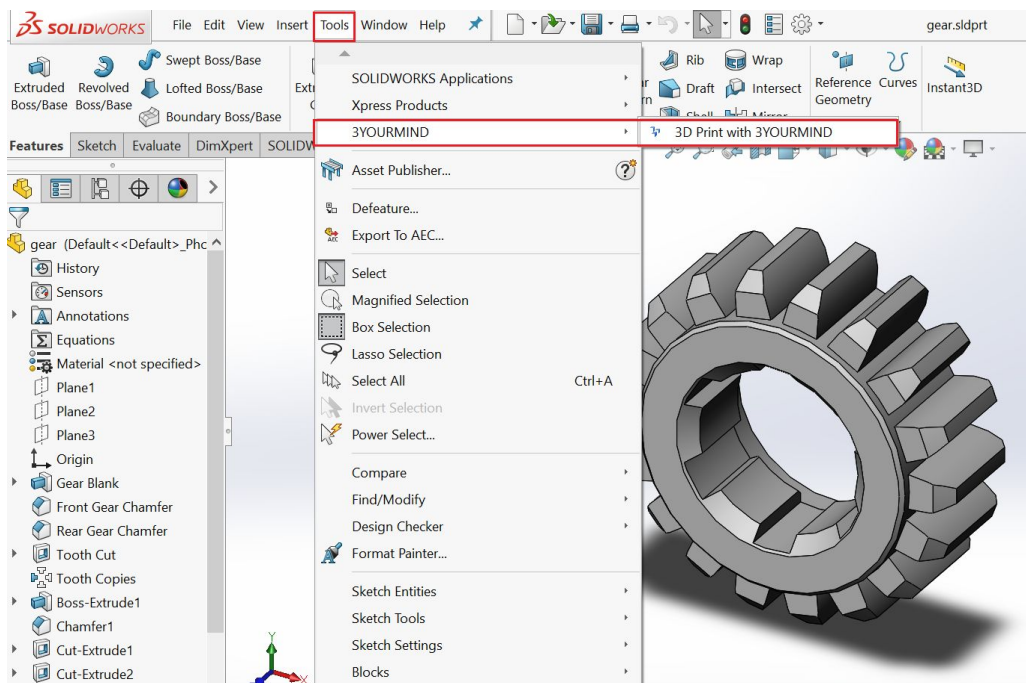
The plugin should be installed and can be used.

## 4. USAGE

To use the plugin, start Solidworks. You can find the button under the '3D Print with 3YOURMIND' Tab



Or click on Tools → 3YOURMIND → 3D Print with 3YOURMIND



The 3D Print with 3YOURMIND command sends all visible objects to the 3YOURMIND website, where the file is repaired and made ready to order.

If you do not see the button in the commandbar see if the addin is activated.

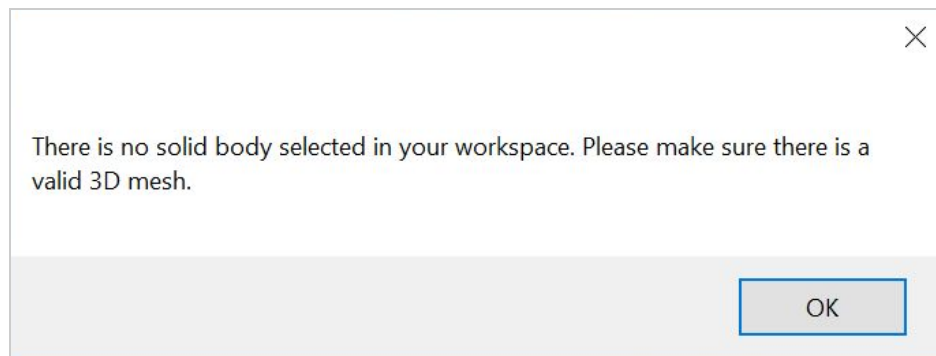
## 5. UNINSTALL/UPDATE TO NEW VERSION

To update the 3D Printing Partner Product to a new version you have to uninstall the old one first.

- Run the installer again and select “uninstall”  
OR
- Deinstall the app like regular windows software with the windows control panel

## 6. IMPORTING 3D FILES

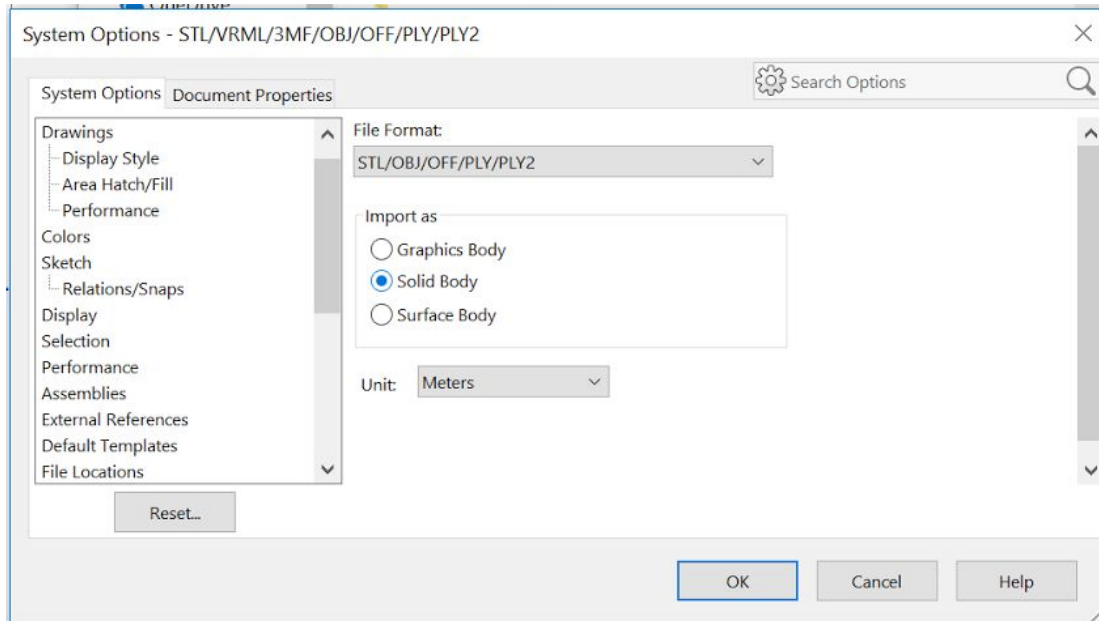
If you import common 3D files, usually you will face a problem. For example, pressing the 3D Print button with an imported STL file will prompt an error message.



This problem can be solved by changing the import options of common 3D files. Go to Open and in the file type selector pick Mesh Files(\*.stl;\*.obj;\*.off;\*.ply;\*.ply2).



Then press Options and select Solid Body.



Importing a file of the above types should now be working flawlessly.

## 7. TROUBLESHOOTING

Should you have some issues regarding the installation or usage try the following steps:

- 1) Restart Solidworks and check your custom toolbar settings
- 2) Check on <https://www.3yourmind.com/3d-printing-partner-product-solidworks> if you are using the latest version of the 3D Printing Partner Product (see the current version at the windows control panel, installed software)
- 3) Make sure that your SolidWorks is supported:  
<https://www.3yourmind.com/3d-printing-partner-product-solidworks>
- 4) Contact us on [plugins@3yourmind.com](mailto:plugins@3yourmind.com)

By using the 3D Printing App the user agrees to the Terms and conditions of 3YOURMIND GmbH (<http://3yourmind.com>).